

Inspire teachers
Improve Learning

Espresso Professional Development

espresso
education

Embed ICT across the curriculum in your school

Select a training option that will help transform your use of

Level 1

Localised use: Incidentally dipping in

The **'introduction' and 'refresh' training options** aim to support Espresso users in the first stages of embedding. These options will highlight effective navigation, features and tools to help teachers integrate the service in teaching. These sessions will be particularly beneficial to teachers that are new to Espresso or to those who need a 'refresh' in order to help them get best value from the service.

Espresso introduction training: welcome to the service

This session aims to ensure teachers are confident using the service by working alongside the development needs of the school and staff.

This session will cover:

- functionality of the staffroom in relation to current school planning
- navigation of modules relevant to current school planning
- navigation of news archive
- functionality of the 'Presentation and Route' tools set within lesson context
- functionality of the search engine

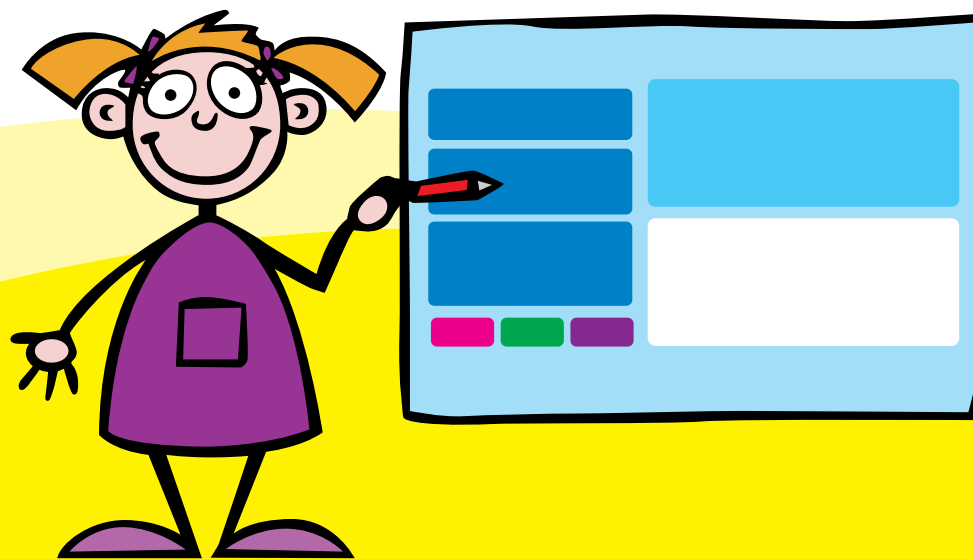
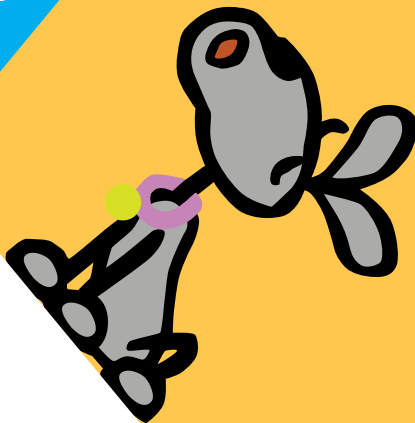
Espresso refresh: discover what's new on Espresso

This session further supports schools with the embedding of the service. It introduces key features highlighting any changes to the service. It is particularly valuable to schools where there has been a turnover of staff or an expansion of network access.

This session will:

- ensure staff are competent in the navigation and usage of all areas of Espresso
- highlight new tools, content and staffroom developments since the last training session
- ensure staff are able to use the planning support
- enable staff to create and save 'routes' through the service to support lesson planning

Book your training NOW!
See back cover



of the Espresso service and benefit from better value!

Level 2

Redesigning planning strategies: Integrating ICT with Espresso from the planning up

The **'Espresso in focus – extension training'** options offer renewing Espresso schools the opportunity to use the service to support a specific curriculum or development theme. These options are available to schools after their Level 1 training and will reflect changes to the service since the previous training.

Using Espresso to plan and create presentations

This session will support teachers as they create lesson plans and presentations in line with school planning.

This session will:

- demonstrate ways to find curriculum linked content through the Espresso staffroom area
- highlight how to use the tools to create and save a series of 'routes' for lesson planning
- demonstrate how to use the tools to create and save a series of teachers'/pupils' presentations
- show how you can use the Community Area to support professional development in school or at home

Using Espresso to support Primary Languages (PL)

This session aims to support teachers with the implementation of Primary Languages, focusing on French, Spanish or German.

This session will:

- identify where to find support on Espresso for primary language pronunciation
- highlight how to use Espresso resources to make connections between languages
- demonstrate how to engage pupils with activities that support oracy, literacy and intercultural understanding in PL
- give exposure to native speakers through rich visual video stimulus
- show how to download and use MP3s to support PL

Using Espresso news

This session will support teachers in their quest to keep the curriculum topical, meaningful and up-to-date.

This session will:

- use Espresso news to support cross-curricular themes, for example PSHE and Literacy
- highlight ways of personalising the Espresso news for differentiation
- show how news resources can support integration of ICT across the curriculum
- identify ways that news resources can support issues surrounding Global Citizenship

Espresso: a spotlight on ...

This session offers a bespoke focus on a particular curriculum or initiative theme.

Agreed in consultation with your trainer, your spotlight might focus on:

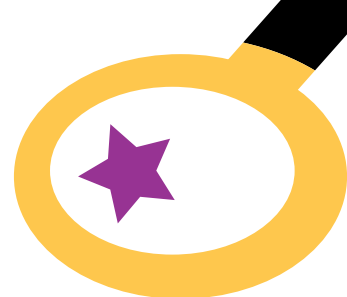
- sustainability 'green' issues
- healthy eating
- topical issues
- a curriculum focus (literacy, history, creative writing etc.)



Level 3



Fully embedded: Innovative use



The **'Espresso – specialist advanced training'** options offer renewing Espresso schools the skills to extend their use of the service in conjunction with other software packages. These options are available to schools where Espresso has been embedded throughout planning and wish to innovate through personalisation of the resources on the service.

Creating your own Espresso resources on an interactive whiteboard

This session will focus on disaggregating Espresso content and personalising resources with interactive whiteboard (IWB) software.

This session will be agreed in consultation with your trainer and can focus on:

- locating appropriate Espresso content
- hyperlinking to Espresso from text or images in your IWB pages
- annotating an Espresso image within an IWB page
- saving Espresso content to the IWB gallery area
- taking snapshots from Espresso video clips

Espresso through the Netmedia Learning Platform

In order to get the most from your investment in Espresso and the Netmedia Learning Platform, it is essential that teachers are confident in using both services together. Training aims to support teachers as they search for Espresso content through the Platform, then create and share a series of curriculum-themed 'Properties' to support personalised learning.

This session will:

- introduce the Learning Platform search facility (allows Espresso content to be pulled direct to your desktop!)
- support teachers as they build collections of resources (eLFs) aligned to current planning
- explore how eLFs can be differentiated and assigned to specific pupils/groups to support personalised learning

Creating 'Photostories' with Espresso content

This session will support teachers as they become familiar with the functions of Photostory 3 software. Set within the context of a particular text type, this session will support interactive and innovative use of ICT.

This session will be agreed in consultation with your trainer and can focus on:

- adding text, sound, images to Photostory 3
- add transitions and panning/zoom features to story
- create and add sound/speech to story
- save in a variety of formats

Personalising learning resources using Espresso and Microsoft Office

This session will support teachers as they disaggregate Espresso content and personalise it with Microsoft Word/PowerPoint.

This session will be agreed in consultation with your trainer and can focus on:

- adding images to a Word/PowerPoint doc
- adding video to a Word/PowerPoint doc
- creating drop-down menus
- adding speech bubbles/autoshapes
- using the 'find and replace' feature



What is the purpose of Espresso training?

We believe that investment in professional development reaps rewards in the classroom. To ensure schools get full value from Espresso, we offer a series of training options to support teachers with the ongoing process of embedding ICT. Over the course of your subscription, our training will support teachers in their transformation into ICT innovators; integrating the service into day-to-day teaching and personalising resources to enhance learning.

Bespoke training service

Our training team are also more than happy to work with you to create a bespoke training programme that matches your professional development needs.

Tried and tested

Every training session that we run ends in a feedback session. Here are just some of the examples of what our satisfied trainees have gained from their experience.

'Our trainer was excellent. He delivered the training with an enthusiastic and humorous manner which put everyone at their ease. After the training everyone was on the computers integrating Espresso into their planning'

Mrs. Sandra Noad, ICT Co-ordinator,
Broad Oak Primary School, Manchester

'I think that the training has inspired the whole staff from the most anti-ICT to the more confident'

Ms. Sheila Frost, Deputy Head Teacher,
St. Joseph's RC Infant School, Croydon



'Excellent training, support from an experienced and realistic team of ex teachers that promote the skills and opportunities to effectively manage and use the service'

Mr. Brian Thomas, The Head Teacher,
Milton Mount Primary School, West Sussex

'There is so much more to Espresso than I first thought. Having Espresso without the training is similar to having a car without petrol!'

Mrs. Sharon Bell, Teacher,
Springwell Village Primary, Sunderland

Book your training NOW!

Espresso training can be scheduled as a morning, afternoon or twilight session (minimum 1.5 hours maximum 2.5 hours) and is available to unlimited members of staff.

Booking your Espresso training has never been easier. Please contact us with your preferred dates by:

- Calling us on Freephone:

0800 0345 200 (Selecting option 3)

- Completing our online booking request form at:

www.espresso.co.uk/insetbooking

- Emailing us at:

insetadmin@espresso.co.uk

- Faxing us on:

020 8237 1221



Christine Roche,
Professional Development Manager

Our professional development team aim to guide and support teachers in their journey towards embedding Espresso and transforming learning, wherever your school may be along its individual journey.

Year on year, schools turn to Espresso's extensive and growing range of annual professional development session offerings with over 5,000 sessions taking place annually. Moving schools from incidental use, to infusing ICT into planned learning scenarios through to personalising Espresso's integrated bank of resources to the individual needs of pupils.

Our friendly, highly-trained team of over 175 educational ICT specialists – ranging from current Espresso classroom practitioners to LA Advisors – will tailor-make a session in support of your school's use of Espresso Primary. We are always on-hand to inspire!